







-  Site Boundary
-  Historic Park & Garden  
(South Northamptonshire Local Plan (1988 - 2006)  
Adopted Oct 1997) (Policy EV28)
-  Area of Important Local Gap  
(South Northamptonshire Local Plan (1988 - 2006)  
Adopted Oct 1997) (Policy EV8)
-  Special Landscape Area  
(South Northamptonshire Local Plan (1988 - 2006)  
Adopted Oct 1997) (Policy EV7)
-  Sites of Special Scientific Interest (SSSI)  
([magic.defra.gov.uk](http://magic.defra.gov.uk))
-  Conservation Areas



NORTHAMPTON GATEWAY  
RAIL FREIGHT INTERCHANGE



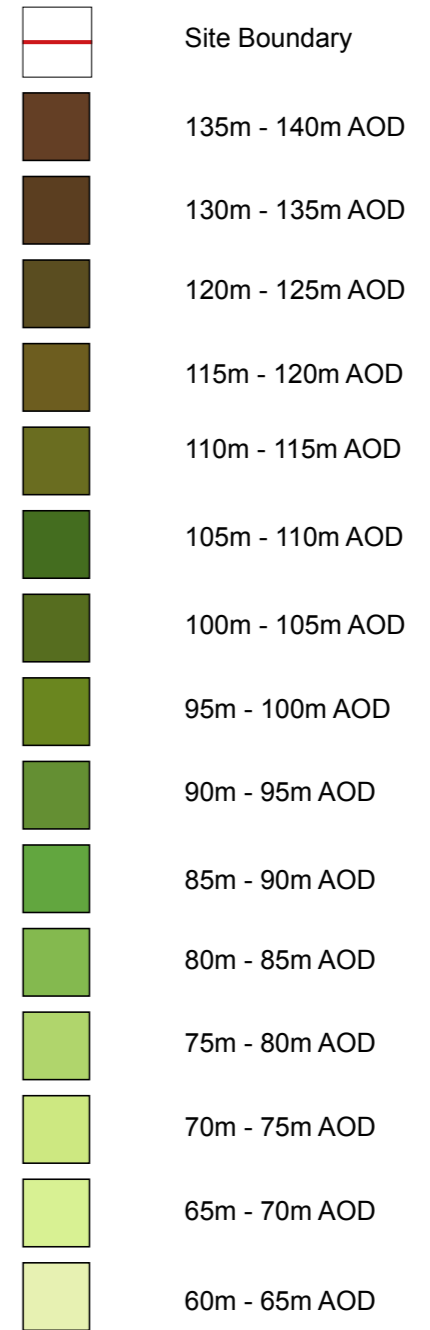
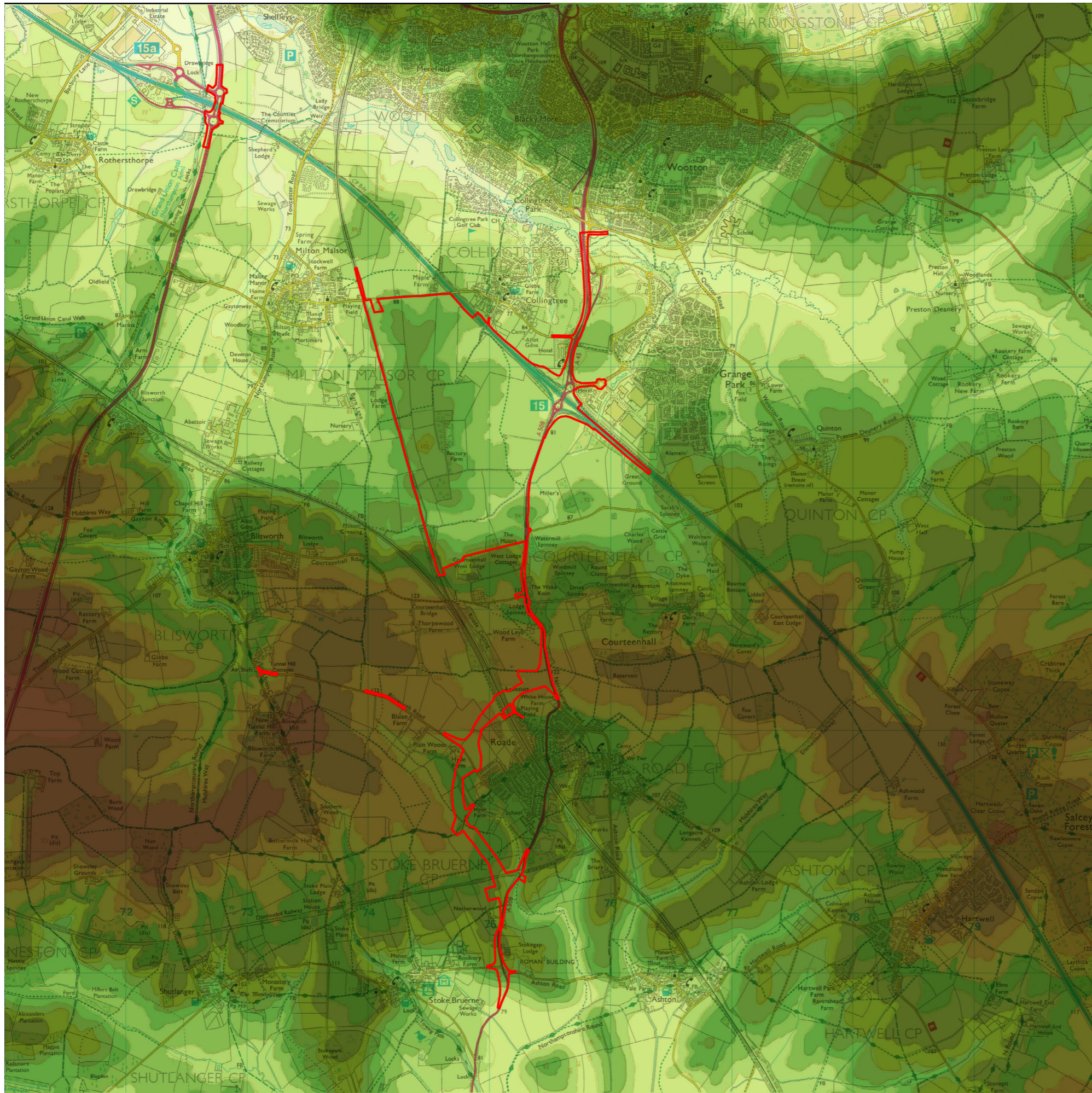
FPCR Environment and Design Ltd  
www.fpcr.co.uk  
LANDSCAPE RELATED POLICIES & DESIGNATIONS

**FIGURE 4.1**

Drawing Status:  
Reference:  
Drawn: ELB  
Date: May 2018  
Scale: NTS @ A3

Project No: 5772 Drawing No: 5772\_LV\_02 Rev:





500m 1000m



**NORTHAMPTON GATEWAY  
RAIL FREIGHT INTERCHANGE**



FPCR Environment and Design Ltd  
www.fpcr.co.uk  
TOPOGRAPHY PLAN

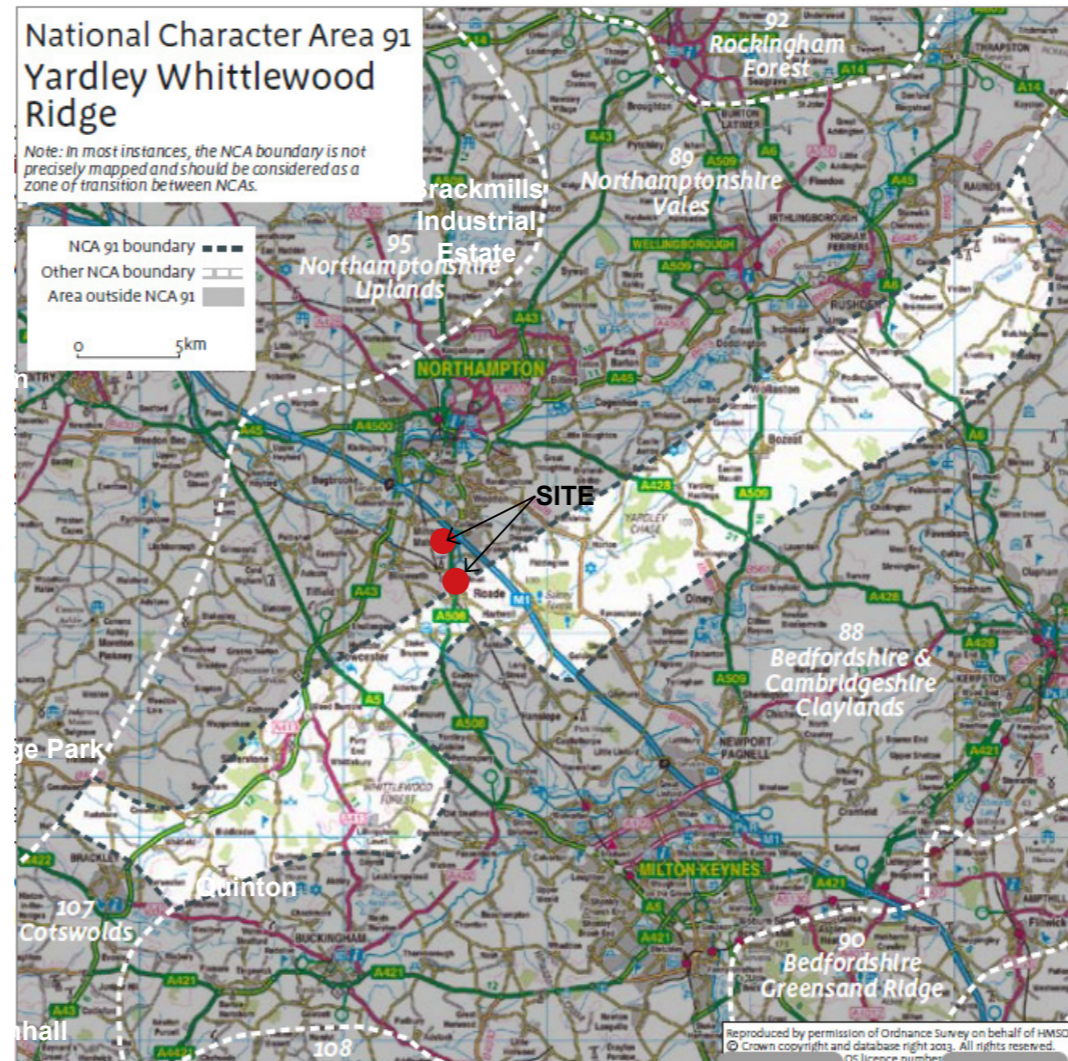
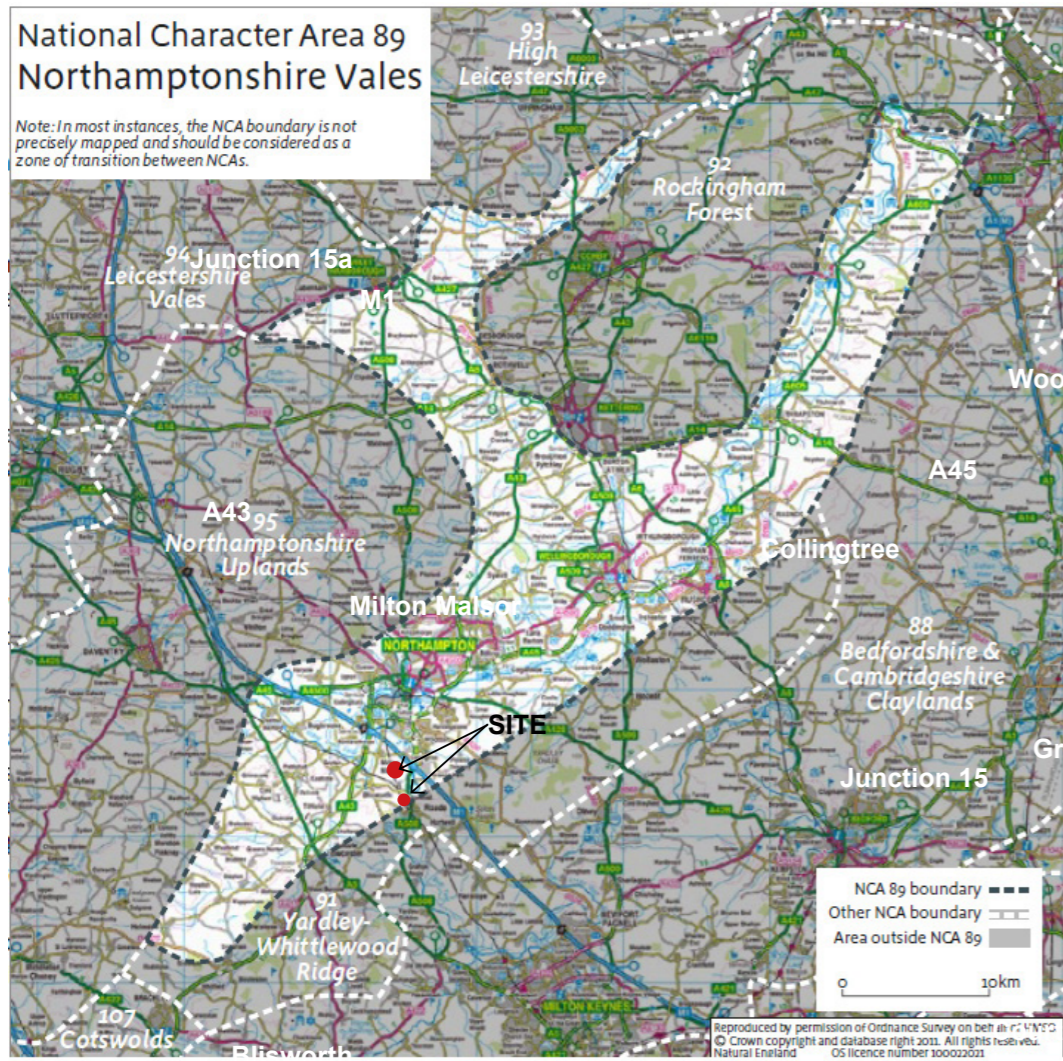
**FIGURE 4.2**

Drawing Status:  
Reference:  
Drawn: ELB  
Date: May 2018  
Scale: NTS @ A3

Project No: 5772 Drawing No: 5772\_LV\_01 Rev:



**A**



**A**

National Character Area 89:  
Northamptonshire Vales

National Character Area 91:  
Yardley Whittlewood Ridge

(as defined in the Natural England  
National Character Assessment)

**B**

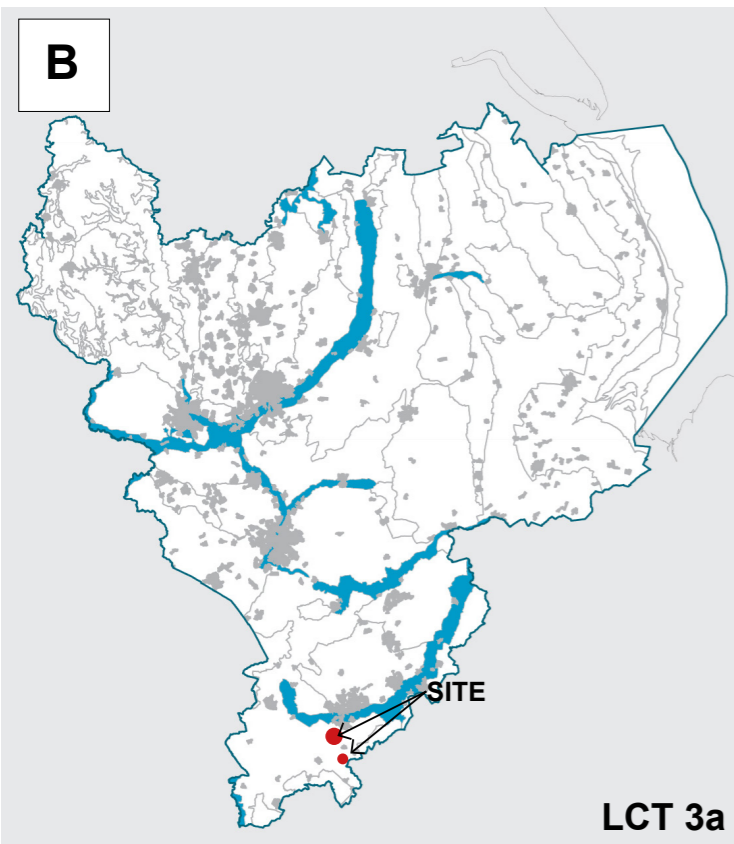
Landscape Character Type 3a:  
Floodplain Valleys

Landscape Character Type 5c:  
Undulating Fixed Farmlands

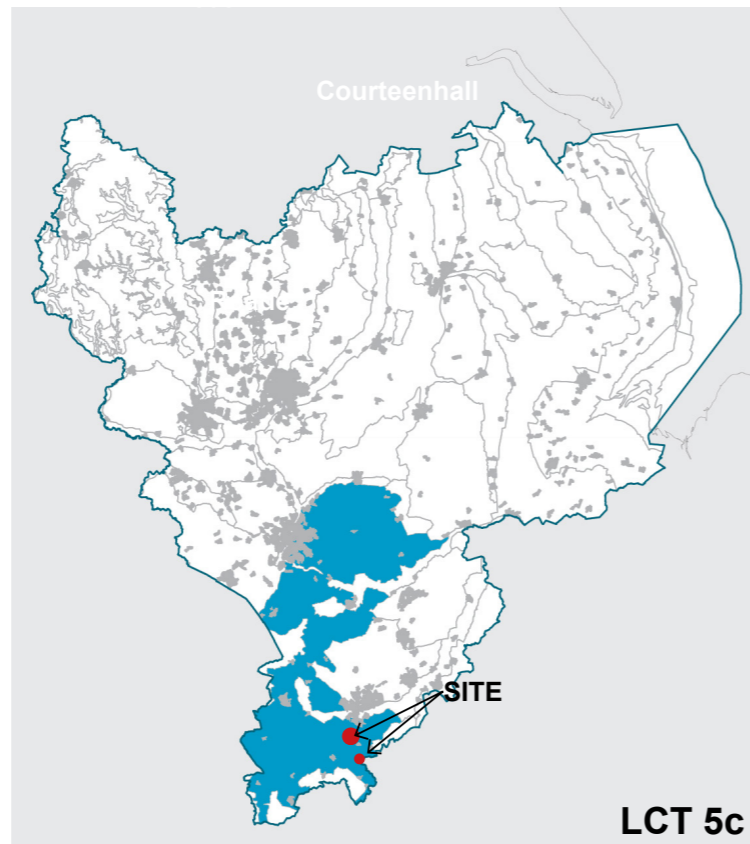
Landscape Character Type 8a:  
Clay Wolds

(as defined in the East Midlands  
Regional Landscape Character  
Assessment)

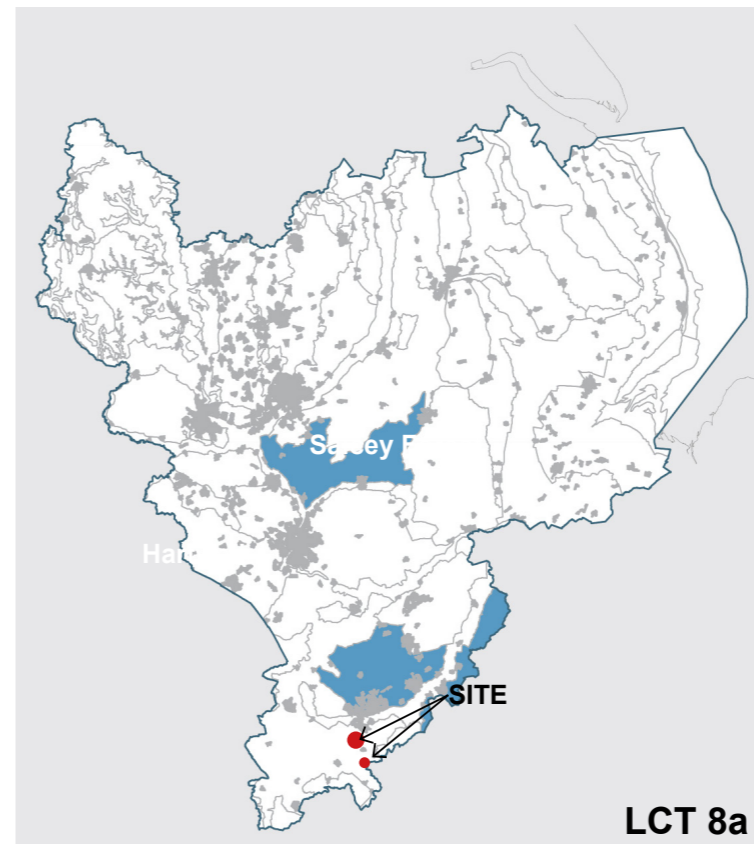
**B**



LCT 3a



LCT 5c



LCT 8a



**NORTHAMPTON GATEWAY  
RAIL FREIGHT INTERCHANGE**



FPCR Environment and Design Ltd  
www.fpcr.co.uk

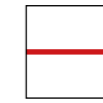
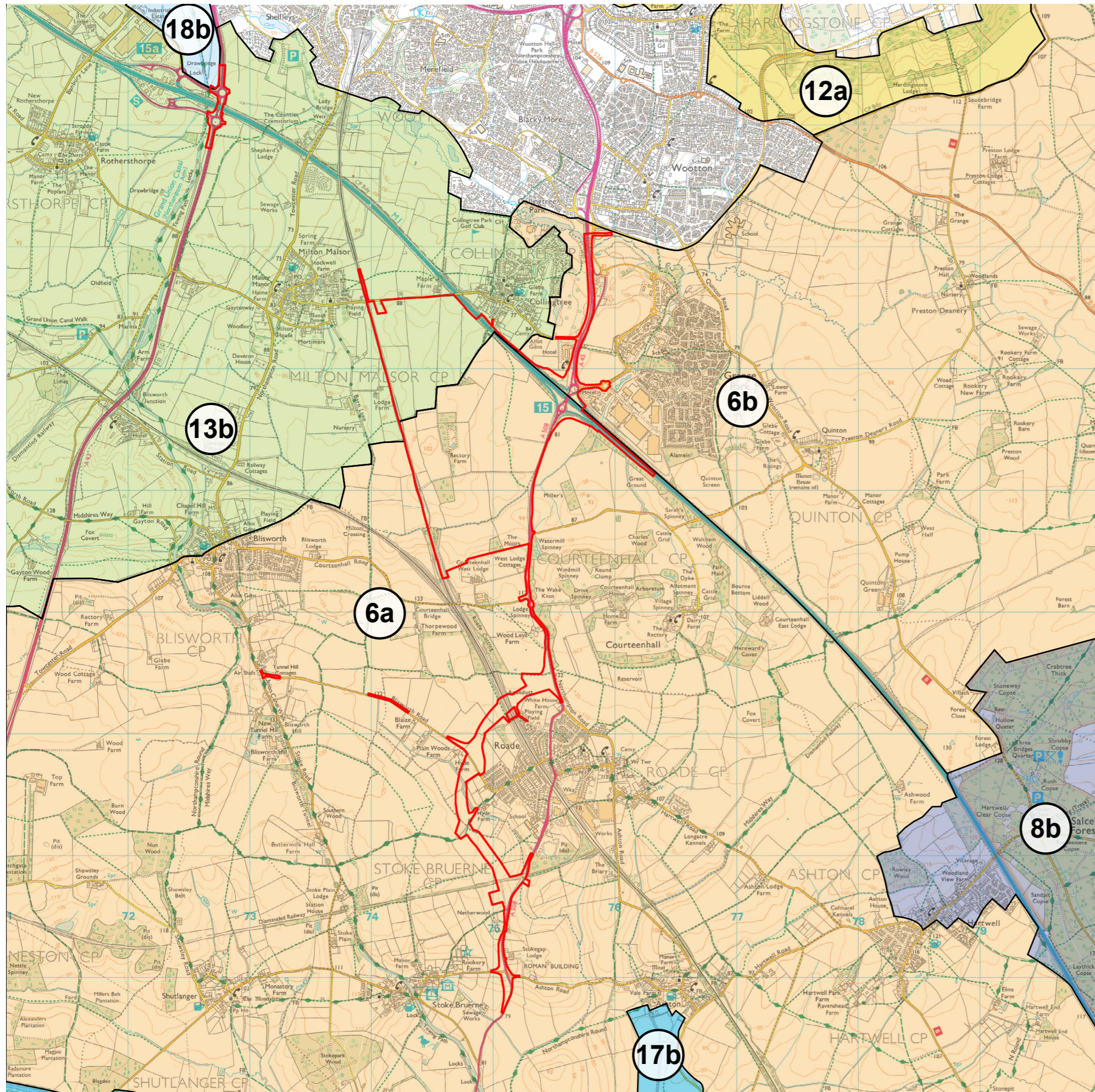
NATIONAL & REGIONAL LANDSCAPE  
CHARACTER AREAS

**FIGURE 4.3**

Drawing Status:  
Reference:  
Drawn: ELB  
Date: May 2018  
Scale: NTS @ A3

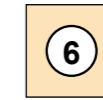
Project No: 5772 Drawing No: 5772\_LV\_03 Rev:





Site Boundary

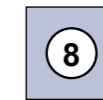
**Northamptonshire Current Landscape Character Assessment**



Undulating Claylands

6a The Tove Catchment

6b Hackleton Claylands



Low Wooded Clay Ridge

8b Salcey Forest & Yardley Chase



Limestone Valley Slopes

12a Wollaston to Irchester



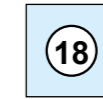
Undulating Hills and Valleys

13b Bugbrooke and Daventry



River Valley Floodplain

17b River Tove Floodplain



Broad River Valley Floodplain

18b The Nene - Weedon Bec to Duston Mill



**NORTHAMPTON GATEWAY  
RAIL FREIGHT INTERCHANGE**



FPCR Environment and Design Ltd  
www.fpcr.co.uk  
COUNTY LANDSCAPE CHARACTER AREAS

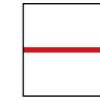
**FIGURE 4.4**

Drawing Status:  
Reference:  
Drawn: ELB  
Date: May 2018  
Scale: NTS @ A3

Project No: 5772 Drawing No: 5772\_LV\_05 Rev:

500m 1000m





Site Boundary



NORTHAMPTON GATEWAY  
RAIL FREIGHT INTERCHANGE



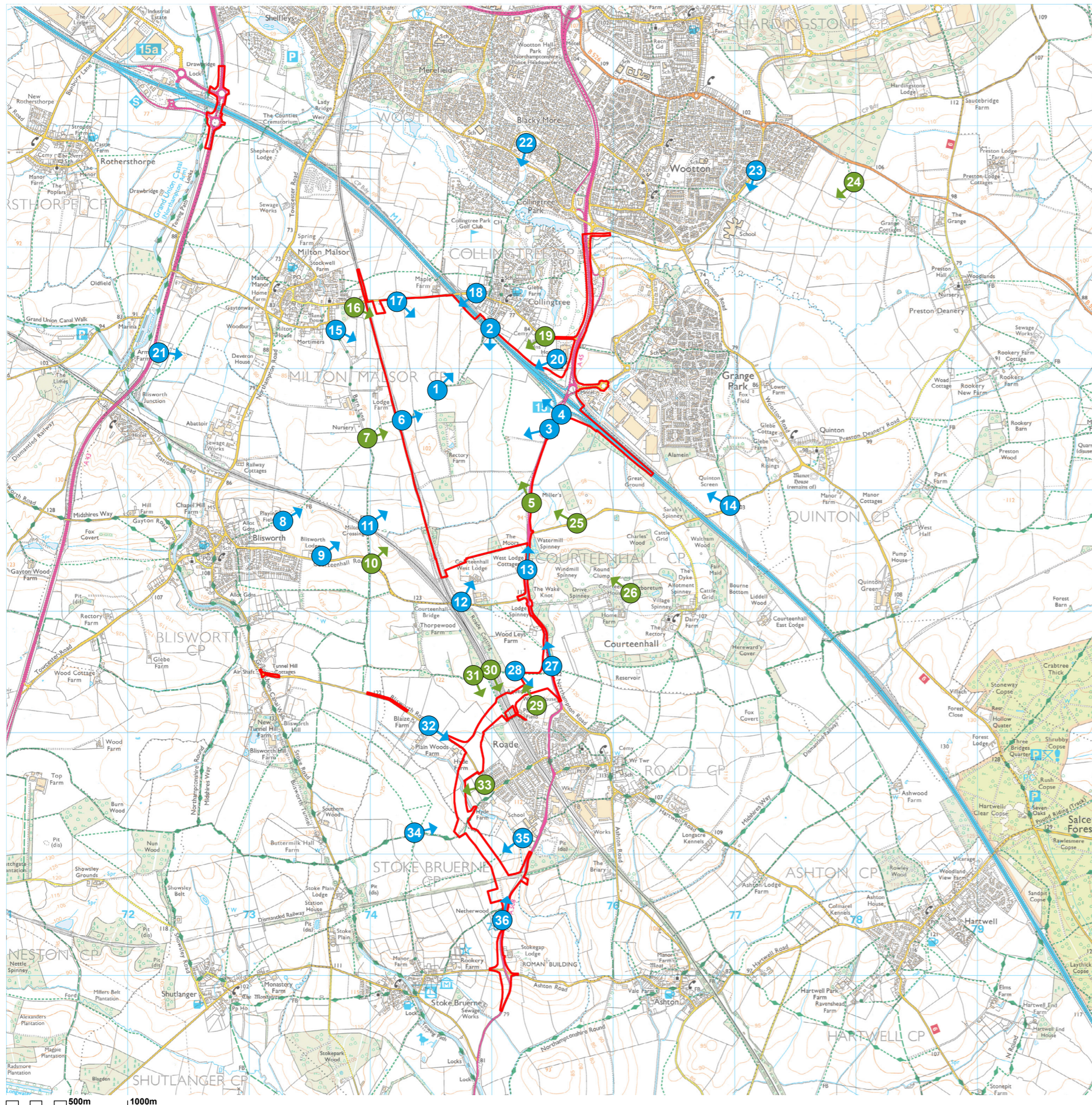
FPCR Environment and Design Ltd  
www.fpcr.co.uk  
AERIAL PHOTOGRAPH




**FIGURE 4.5**

Drawing Status:  
Reference:  
Drawn: ELB  
Date: May 2018  
Scale: NTS @ A3

Project No: 5772 Drawing No: 5772\_LV\_03 Rev:





-  Site Boundary
-  Photo Viewpoint Location
-  Photo Viewpoint and Photomontage Location



**NORTHAMPTON GATEWAY  
RAIL FREIGHT INTERCHANGE**



FPCR Environment and Design Ltd  
www.fpcr.co.uk

PHOTO VIEWPOINT LOCATIONS

**FIGURE 4.6**

Drawing Status:  
Reference:  
Drawn: HT/ TRJ  
Date: May 2018  
Scale: NTS @ A3

Project No: 5772 Drawing No: 5772-LV-06 Rev: A



Main Site (Approx Extent)

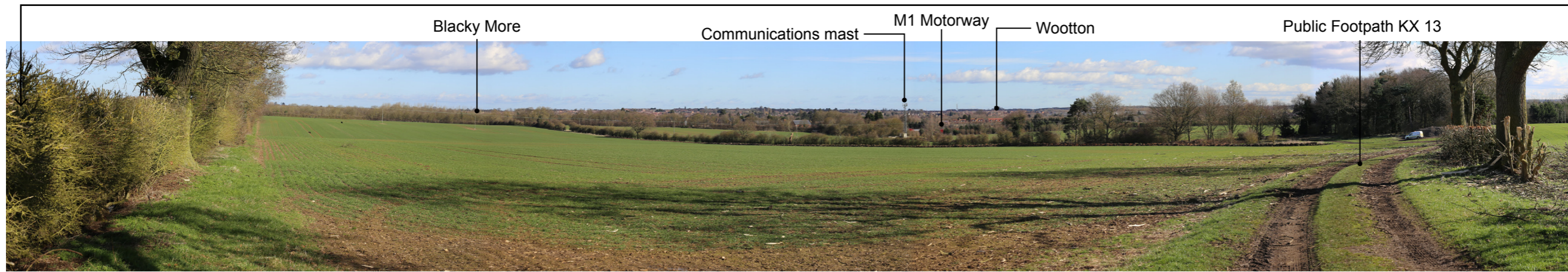


PHOTO VIEWPOINT 1: North East from Public Footpath KX13.

Main Site (Approx Extent)



PHOTO VIEWPOINT 2: South from Public Footpath KX13 (Footbridge over M1).

Main Site (Approx Extent)



PHOTO VIEWPOINT 3: Panorama looking North West across the Main Site from East Side

NORTHAMPTON GATEWAY  
RAIL FREIGHT INTERCHANGE



FPCR Environment and Design Ltd  
www.fpcr.co.uk

PHOTO VIEWPOINTS 1, 2 & 3  
FIGURE 4.7

Drawing Status:  
Reference:  
Drawn: HT / TRJ  
Date: May 2018  
Scale: NTS @ A3

Project No: 5772 Drawing No: 5772\_LV\_7 Rev: A



Main Site (Approx Extent)

M1 / A508 roundabout

Highgate Wood

Churchill's Wood

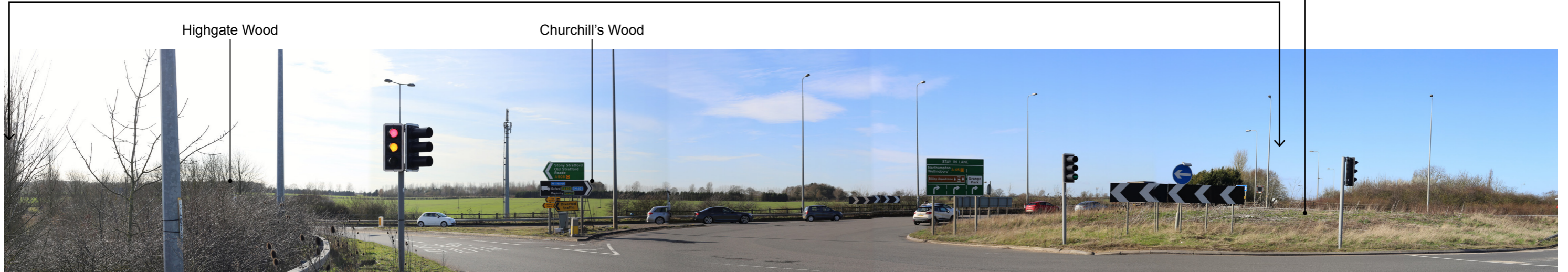


PHOTO VIEWPOINT 4: North West from Junction 15 roundabout.

Main Site (Approx Extent)

A508



PHOTO VIEWPOINT 5: North West from A508.

Main Site (Approx Extent)

Churchill's Wood

Highgate Wood



PHOTO VIEWPOINT 6: Public Footpath KX13, looking east from railway bridge.

NORTHAMPTON GATEWAY  
RAIL FREIGHT INTERCHANGE

**ROXHILL**

FPCR Environment and Design Ltd  
www.fpcr.co.uk

PHOTO VIEWPOINTS 4, 5 & 6  
FIGURE 4.7

Drawing Status:  
Reference:  
Drawn: HT / TRJ  
Date: May 2018  
Scale: NTS @ A3





PHOTO VIEWPOINT 7: East from Barn Lane

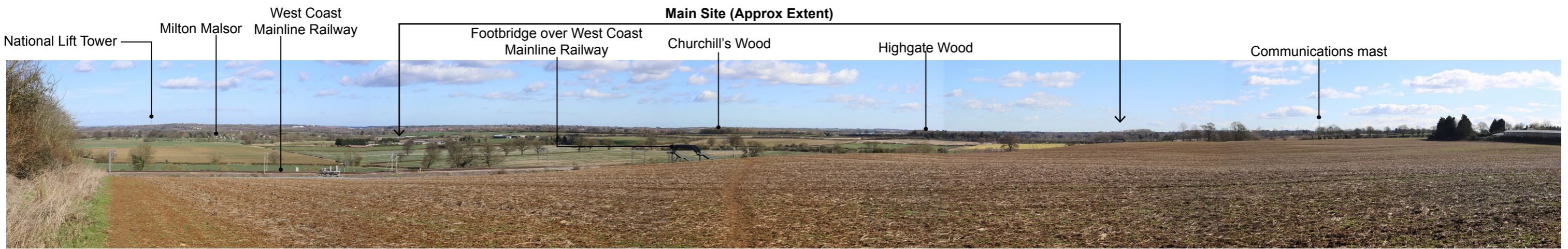


PHOTO VIEWPOINT 8: North East from Public Footpath RD1, to east of Blisworth playing field.



PHOTO VIEWPOINT 9: North East from Blisworth Lodge.

NORTHAMPTON GATEWAY  
RAIL FREIGHT INTERCHANGE



FPCR Environment and Design Ltd  
www.fpcr.co.uk

PHOTO VIEWPOINTS 7, 8 & 9  
FIGURE 4.7

Drawing Status:  
Reference:  
Drawn: HT / TRJ  
Date: May 2018  
Scale: NTS @ A3

Project No: 5772 Drawing No: 5772\_LV\_9 Rev: A



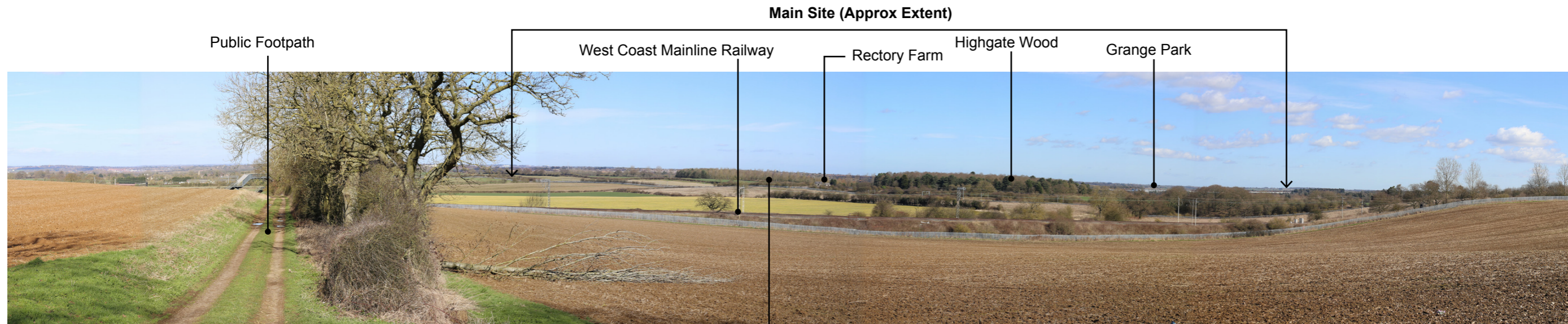


PHOTO VIEWPOINT 10: North East from Courteenhall Road.

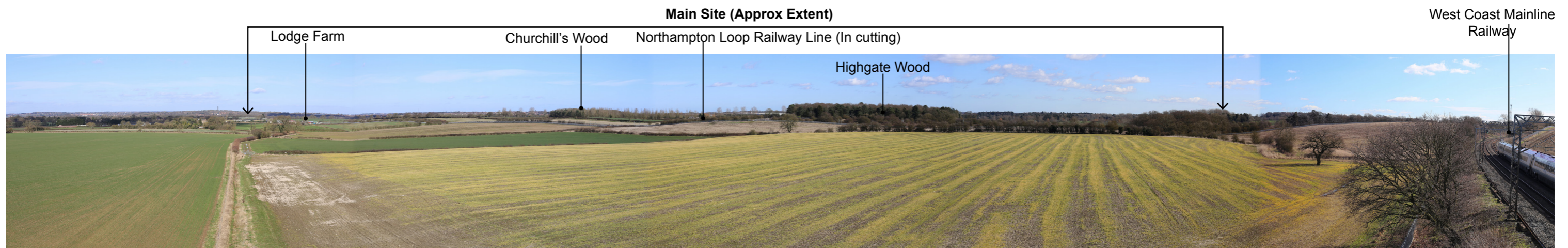


PHOTO VIEWPOINT 11: North East from Milton Crossing (Public Footpath KX15).



PHOTO VIEWPOINT 12: North from Courteenhall Road to east of Courteenhall railway bridge.

NORTHAMPTON GATEWAY  
RAIL FREIGHT INTERCHANGE



FPCR Environment and Design Ltd  
www.fpcr.co.uk

PHOTO VIEWPOINTS 10, 11 & 12  
FIGURE 4.7

Drawing Status:  
Reference:  
Drawn: HT / TRJ  
Date: May 2018  
Scale: NTS @ A3

Project No: 5772 Drawing No: 5772\_LV\_10 Rev: A



Main Site (Approx Extent)



PHOTO VIEWPOINT 13: North from A508 near West Lodge Cottages.



PHOTO VIEWPOINT 14: North West from Public Bridleway LF1.

Main Site (Approx Extent)



PHOTO VIEWPOINT 15: East from Barn Lane, Milton Malsor.

Public Bridleway LF1

Quinton screen

Alamein (Spinney)

General Direction of the Main Site

M1 Motorway

NORTHAMPTON GATEWAY  
RAIL FREIGHT INTERCHANGE



FPCR Environment and Design Ltd  
www.fpcr.co.uk

PHOTO VIEWPOINTS 13, 14 & 15  
FIGURE 4.7

Drawing Status:		
Reference:		
Drawn:	HT / TRJ	
Date:	May 2018	
Scale:	NTS @ A3	

Project No:	5772	Drawing No:	5772_LV_11	Rev:	A
-------------	------	-------------	------------	------	---





PHOTO VIEWPOINT 16: South East from Milton Malsor Sports Field.



PHOTO VIEWPOINT 17: South East from Collingtree Road adjacent to Maple House.



PHOTO VIEWPOINT 18: South West from Ash Lane, Collingtree.

NORTHAMPTON GATEWAY  
RAIL FREIGHT INTERCHANGE



FPCR Environment and Design Ltd  
www.fpcr.co.uk

PHOTO VIEWPOINTS 16, 17 & 18  
FIGURE 4.7

Drawing Status:  
Reference:  
Drawn: HT / TRJ  
Date: May 2018  
Scale: NTS @ A3

Project No: 5772 Drawing No: 5772\_LV\_12 Rev: A



**Main Site (Approx Extent)  
(Beyond M1 Motorway)**



**PHOTO VIEWPOINT 19: South west from Watering Lane, Collingtree.**

**Main Site (Approx Extent)  
(Beyond M1 Motorway)**



**PHOTO VIEWPOINT 20: West from Northampton Hilton Hotel, Watering Lane, Collingtree.**

A43

General Direction of the Main Site



**PHOTO VIEWPOINT 21: East from access road to former service station, A43.**

**NORTHAMPTON GATEWAY  
RAIL FREIGHT INTERCHANGE**



FPCR Environment and Design Ltd  
www.fpcr.co.uk

PHOTO VIEWPOINTS 19, 20 & 21  
FIGURE 4.7

Drawing Status:  
Reference:  
Drawn: HT / TRJ  
Date: May 2018  
Scale: NTS @ A3

Project No: 5772 Drawing No: 5772\_LV\_13 Rev: A



General Direction of the Main Site



PHOTO VIEWPOINT 22: South from Blackymore Park

General Direction of the Main Site

Caroline Chisholm School

Wooldale Road

Properties on edge of Wootton



PHOTO VIEWPOINT 23: South West from Wooldale Road, Wootton.

General Direction of the Main Site

Properties on edge of Wootton



PHOTO VIEWPOINT 24: South West from PROW towards Grange Park

NORTHAMPTON GATEWAY  
RAIL FREIGHT INTERCHANGE



FPCR Environment and Design Ltd  
www.fpcr.co.uk

PHOTO VIEWPOINTS 22, 23 & 24  
FIGURE 4.7

Drawing Status:  
Reference:  
Drawn: HT / TRJ  
Date: May 2018  
Scale: NTS @ A3

Project No: 5772 Drawing No: 5772\_LV\_14 Rev: A





PHOTO VIEWPOINT 25: West from un-named road north of Courteenhall Park

General Direction of the Main Site



PHOTO VIEWPOINT 26: North West from Second Floor, NE Corner of Courteenhall House

Northampton Road (A508)

Edge of grounds of Courteenhall



PHOTO VIEWPOINT 27: North from A508 Northampton Road

NORTHAMPTON GATEWAY  
RAIL FREIGHT INTERCHANGE



FPCR Environment and Design Ltd  
www.fpcr.co.uk

PHOTO VIEWPOINTS 25, 26 & 27  
FIGURE 4.7

Drawing Status:  
Reference:  
Drawn: HT / TRJ  
Date: May 2018  
Scale: NTS @ A3

Project No: 5772 Drawing No: 5772\_LV\_15 Rev: A





**PHOTO VIEWPOINT 28: South from Public Footpath**



**PHOTO VIEWPOINT 29: North from Roade Playing Fields**



**PHOTO VIEWPOINT 30: South towards aquaduct from footbridge over Railway (PROW)**

**NORTHAMPTON GATEWAY  
RAIL FREIGHT INTERCHANGE**



FPCR Environment and Design Ltd  
www.fpcr.co.uk

PHOTO VIEWPOINTS 28, 29 & 30  
FIGURE 4.7

Drawing Status:  
Reference:  
Drawn: HT / TRJ  
Date: May 2018  
Scale: NTS @ A3

Project No: 5772 Drawing No: 5772\_LV\_16 Rev: A



Road Cutting



PHOTO VIEWPOINT 31: South West from Public Footpath

Blisworth Road

Plain Woods Farm



PHOTO VIEWPOINT 32: South East from Blisworth Road



PHOTO VIEWPOINT 33: West from Blisworth Road

NORTHAMPTON GATEWAY  
RAIL FREIGHT INTERCHANGE



FPCR Environment and Design Ltd  
www.fpcr.co.uk

PHOTO VIEWPOINTS 31, 32 & 33  
FIGURE 4.7

Drawing Status:  
Reference:  
Drawn: HT / TRJ  
Date: May 2018  
Scale: NTS @ A3



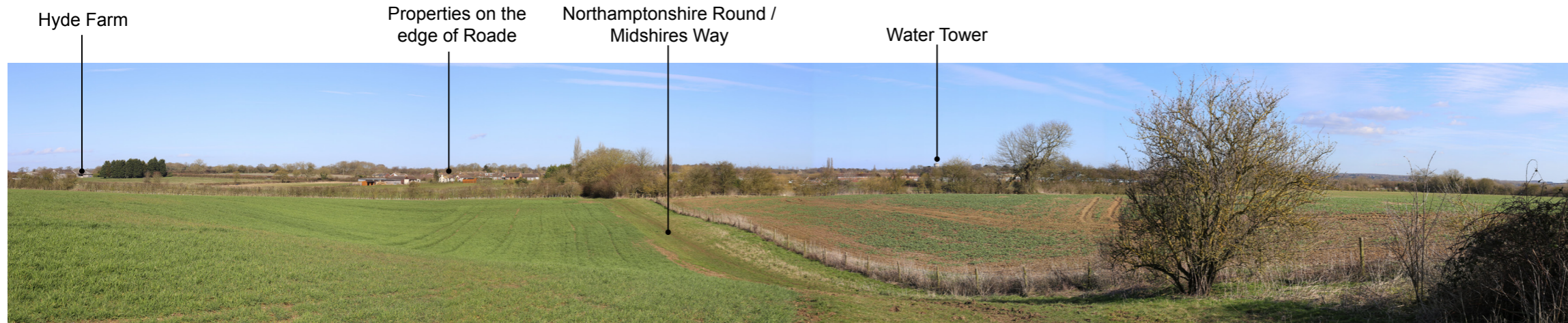


PHOTO VIEWPOINT 34: East from Public Bridleway (Northamptonshire Round / Midshires Way)



PHOTO VIEWPOINT 35: West from Public Footpath (Roade School Sports College)



PHOTO VIEWPOINT 36: North from bridleway leading to A508

NORTHAMPTON GATEWAY  
RAIL FREIGHT INTERCHANGE



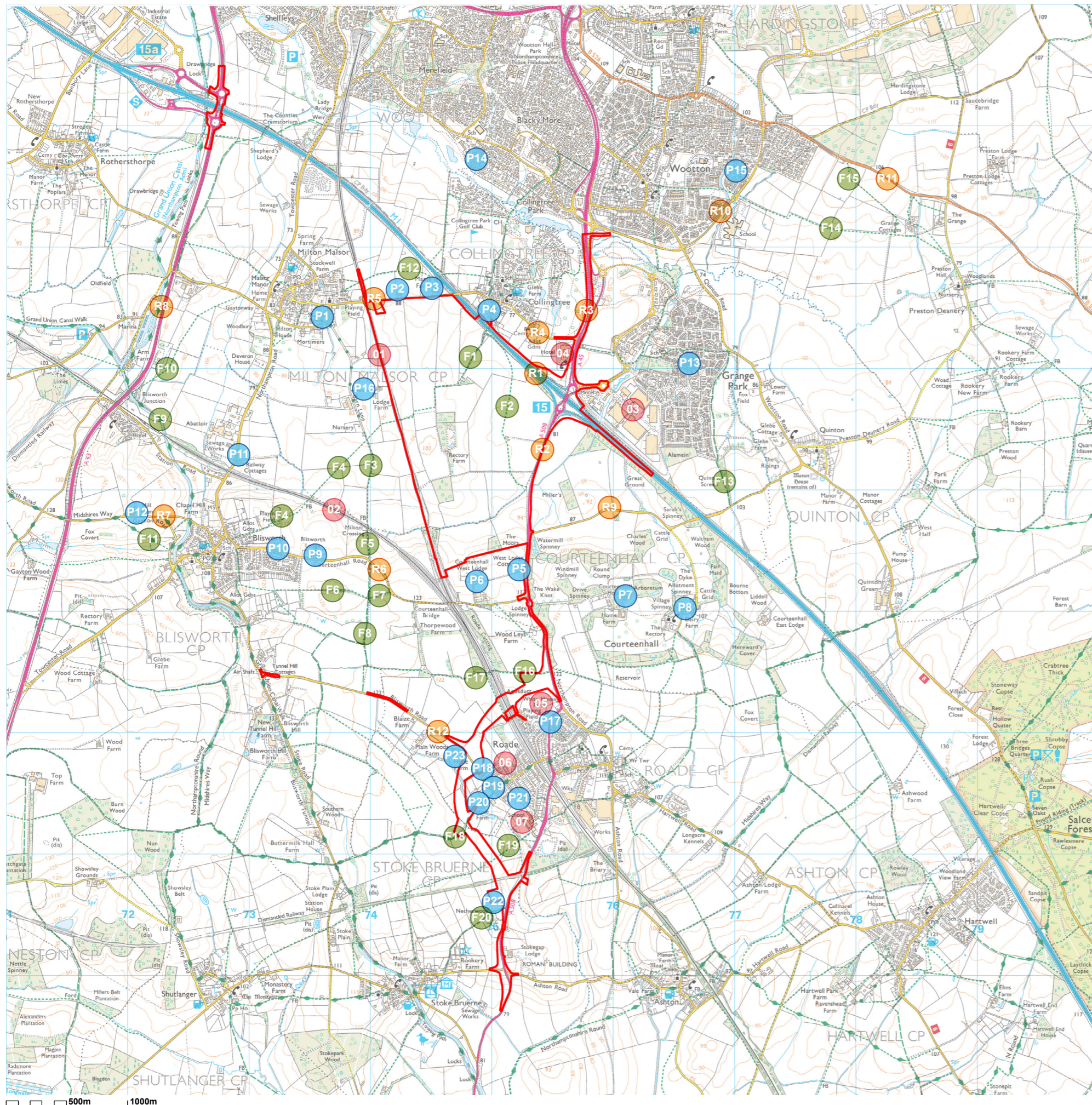
FPCR Environment and Design Ltd  
www.fpcr.co.uk

PHOTO VIEWPOINTS 34, 35 & 36  
FIGURE 4.7

Drawing Status:  
Reference:  
Drawn: HT / TRJ  
Date: May 2018  
Scale: NTS @ A3

Project No: 5772 Drawing No: 5772\_LV\_18 Rev: A





Site Boundary

**Visual Receptors**



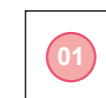
Settlement and Properties (with Reference)



Public Rights of Way (with Reference)



Roads (with Reference)



Other Visual Receptors (with Reference)

**NOTE:**  
For details of the visual effects of the Proposed Development upon the identified Visual Receptors please refer to the Visual Effects Table (VET) at Appendix 4.E of the Environmental Statement.



**NORTHAMPTON GATEWAY  
RAIL FREIGHT INTERCHANGE**



FPCR Environment and Design Ltd  
www.fpcr.co.uk

VISUAL RECEPTORS

**FIGURE 4.8**

Drawing Status:

Reference:

Drawn: MST / TRJ

Date: May 2018

Scale: NTS @ A3

Project No: 5772

Drawing No: 5772-LV-07

Rev: